

Norwich Western Link

Drainage Strategy Report

Appendix 14 :

Ground Investigation Reports

Part 3 of 8

Author: Ramboll

Document Reference: 4.04.14

Version Number: 00

Date: March 2024

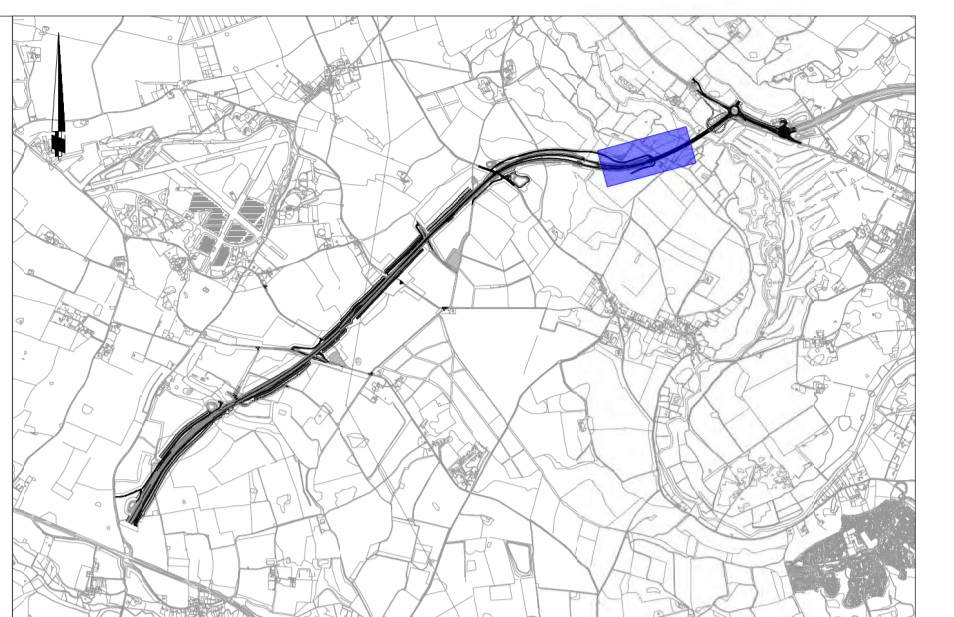
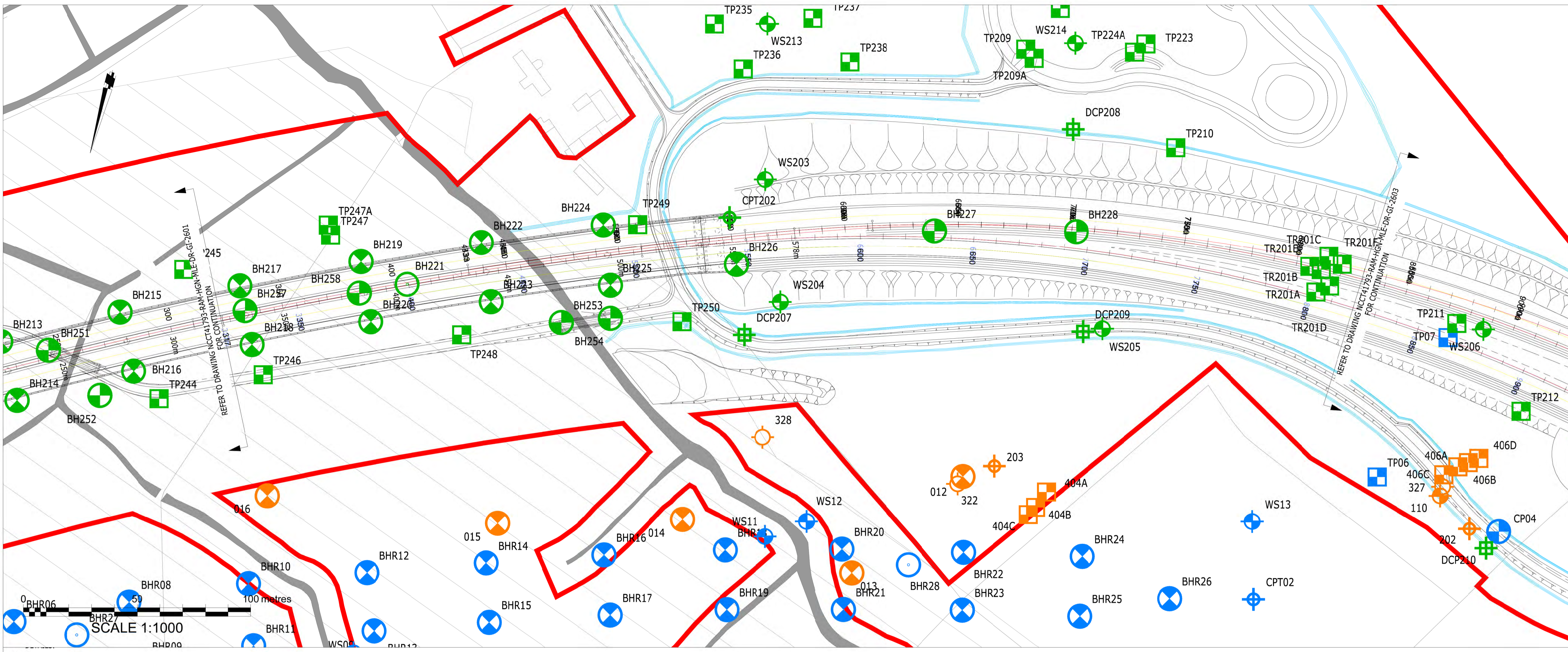


Contents

1	Introduction	1
---	--------------------	---

1 Introduction

- 1.1.1 This document contains geotechnical long section drawings that are part of the Ramboll Ground Investigation report. The geotechnical long sections show the different soil types with depth across the scheme and are intended to provide evidence of the existing ground conditions that are stated within the Drainage Strategy Report.
- 1.1.2 We have included a summary of key information shown in this document in an accessible format. However, some users may not be able to access all technical details. If you require this document in a more accessible format please contact: norwichwesternlink@norfolk.gov.uk



- Notes:**
- DO NOT SCALE FROM THIS DRAWING.
 - ALL DIMENSIONS ARE IN METRES UNLESS OTHERWISE STATED.
 - THIS DRAWING IS TO BE READ IN CONJUNCTION WITH ALL RELEVANT ARCHITECTS AND ENGINEERS DRAWINGS AND SPECIFICATIONS.
 - THE DESIGN IS BASED ON THE HE LOCAL GRID.
 - ZONES OF NO RECOVERY AND AREAS OF CORE LOSS WERE RECORDED WITHIN THE CHALK STRATUM. THESE HAVE BEEN IDENTIFIED AS DRILLING/IN-SITU TESTS INDUCED OR DUE TO PRESENCE OF FLINT COBBLES AND BOULDERS. THE FACTUAL REPORT AND GROUND INVESTIGATION REPORT SHOULD BE REFERRED TO FOR FURTHER DETAILS.

- GEOLOGY LEGEND**
- Topsoil
 - Flexible Pavement
 - Made Ground (Granular)
 - Made Ground (Cohesive)
 - Concrete
 - Peat
 - Alluvium (Granular)
 - Alluvium (Cohesive)
 - Glacial Deposits (Granular)
 - Glacial Deposits (Cohesive)
 - No Recovery
 - Head Deposits (Granular)
 - Head Deposits (Cohesive)
 - River Terrace Deposits
 - Lowestoft Formation (Granular)
 - Lowestoft Formation (Till)
 - Sheringham Cliffs Formation (Cohesive)
 - Sheringham Cliffs Formation (Granular)
 - Structureless Chalk
 - Structured Chalk

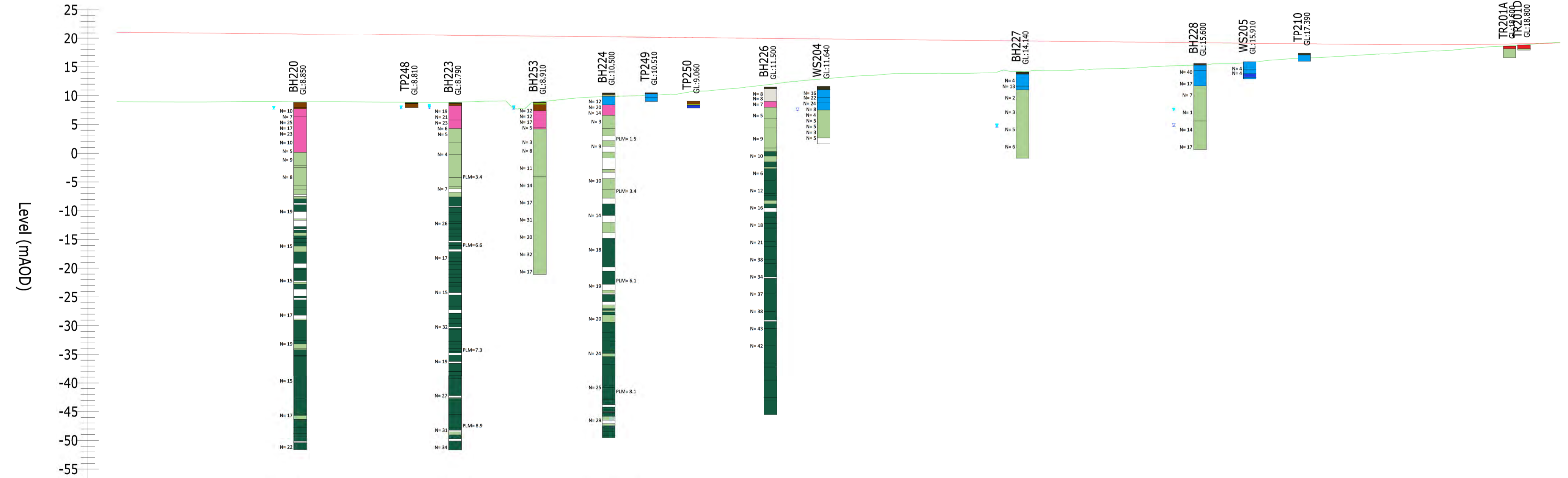
- EXPLORATORY HOLE LEGEND**
- Ground Level
 - Unrecorded SPT 'N' Value
 - Undrained Shear Strength Value (kPa)
 - Water Strike
 - Water level recorded following strike
 - Menard Limit Pressure (MPa)

- GROUND INVESTIGATION PHASES**
- 2022 ALIGNMENT REFINEMENT GROUND INVESTIGATION
 - 2021 SUPPLEMENTARY STAGE 1 GROUND INVESTIGATION
 - 2019/20 PRELIMINARY GROUND INVESTIGATION

PLAN LEGEND

- SITE EXTENTS BOUNDARY
- CABLE PERCUSSION BOREHOLE
- ROTARY OPEN HOLE BOREHOLE
- CABLE PERCUSSION WITH ROTARY FOLLOW ON BOREHOLE
- WINDOWLESS SAMPLE
- DYNAMIC PROBE
- TRIAL PIT/TRENCH
- CPT LOCATION
- DYNAMIC CONE PENETROMETER
- PAVEMENT CORE

NWL-MAINLINE NORTH-(SHEET 2)
SCALE: H 1:1000,V 1:500. DATUM: -55.000



Chainage	0+317	320	330	340	350	360	370	380	390	400	410	420	430	440	450	460	470	480	490	500	510	520	530	540	550	560	570	580	590	600	610	620	630	640	650	660	670	680	690	700	710	720	730	740	750	760	770	780	790	800	810	820
Existing Levels	8.966	8.933	8.915	8.917	8.985	8.889	8.951	8.963	8.926	8.891	8.873	8.838	8.638	8.563	9.074	8.155	9.239	9.640	9.687	9.882	10.027	10.279	10.765	11.122	11.178	11.708	12.316	12.804	13.215	13.898	14.361	14.443	14.651	14.793	15.108	15.296	15.187	15.563	15.731	16.209	16.548	16.636	16.752	17.044	17.247	17.635	17.842	18.123	18.281	18.627	18.942	19.166
Proposed Levels	21.105	21.089	21.039	20.989	20.939	20.888	20.838	20.788	20.738	20.688	20.638	20.588	20.538	20.488	20.438	20.388	20.338	20.288	20.238	20.188	20.138	20.088	20.038	19.988	19.938	19.888	19.838	19.788	19.738	19.688	19.638	19.588	19.538	19.488	19.438	19.388	19.337	19.288	19.238	19.187	19.138	19.087	19.037	18.987	18.937	18.886	18.835	18.784	18.733	18.682	18.631	18.580
Level Difference	12.130	12.133	12.106	12.074	12.022	11.904	11.852	11.838	11.775	11.763	11.747	11.715	11.701	11.536	11.364	12.233	11.099	10.601	10.356	10.161	9.858	9.303	8.860	8.280	7.623	7.085	6.623	6.222	5.870	5.808	5.736	5.626	5.327	5.127	4.996	4.737	4.554	4.187	3.942	3.625	3.407	2.878	2.497	2.238	1.893	1.648	1.243	1.044	0.637	0.348	0.117	-0.129

Mapping reproduced by permission of Ordnance Survey on behalf of HMSO.
© Crown copyright and database rights 2020 Ordnance Survey 100019340.

First Issue

P01	AR	AR	AR	02/02/23
-----	----	----	----	----------

Norfolk County Council
Tom McCabe
Executive Director of Community and Environmental Services
Norfolk County Council
County Hall, Martineau Lane
Norwich NR1 2SG

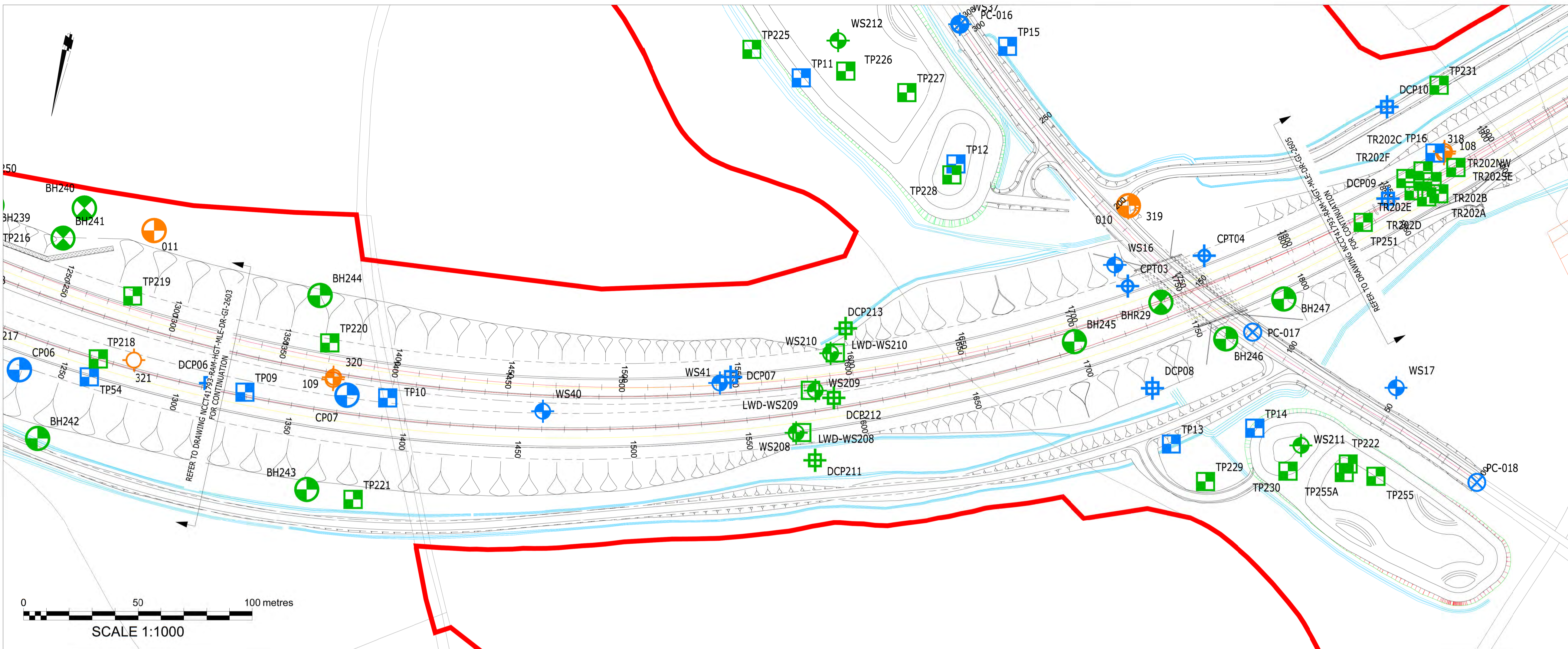
Norwich Western Link
ferrovial construction
RAMBOLL

DRAWING TITLE
NORWICH WESTERN LINK
GEOLOGICAL LONG SECTION
SHEET 2
NORTHBOUND

DRAWING STATUS
S5 SUITABLE FOR REVIEW AND ACCEPTANCE

DRAWN	CHECKED	APPROVED	AUTHORISED
AR	AR	AR	---
SCALE @ A1 SIZE	DATE	REVISION	
1:1000	02/02/23	P01	

DRAWING NUMBER
NCCT41793-RAM-HGT-MLE-DR-GI-2602



- Notes:**
- DO NOT SCALE FROM THIS DRAWING.
 - ALL DIMENSIONS ARE IN METRES UNLESS OTHERWISE STATED.
 - THIS DRAWING IS TO BE READ IN CONJUNCTION WITH ALL RELEVANT ARCHITECTS AND ENGINEERS DRAWINGS AND SPECIFICATIONS.
 - THE DESIGN IS BASED ON THE HE LOCAL GRID.
 - ZONES OF NO RECOVERY AND AREAS OF CORE LOSS WERE RECORDED WITHIN THE CHALK STRATUM. THESE HAVE BEEN IDENTIFIED AS DRILLING/IN-SITU TESTS INDUCED OR DUE TO PRESENCE OF FLINT COBBLES AND BOULDERS. THE FACTUAL REPORT AND GROUND INVESTIGATION REPORT SHOULD BE REFERRED TO FOR FURTHER DETAILS.

- GEOLOGY LEGEND**
- Topsoil
 - Flexible Pavement
 - Made Ground (Granular)
 - Made Ground (Cohesive)
 - Concrete
 - Peat
 - Alluvium (Granular)
 - Alluvium (Cohesive)
 - Glacial Deposits (Granular)
 - Glacial Deposits (Cohesive)
 - Head Deposits (Granular)
 - Head Deposits (Cohesive)
 - River Terrace Deposits
 - Lowestoft Formation (Granular)
 - Lowestoft Formation (Till)
 - Sheringham Cliffs Formation (Cohesive)
 - Sheringham Cliffs Formation (Granular)
 - Structureless Chalk
 - Structured Chalk
 - No Recovery

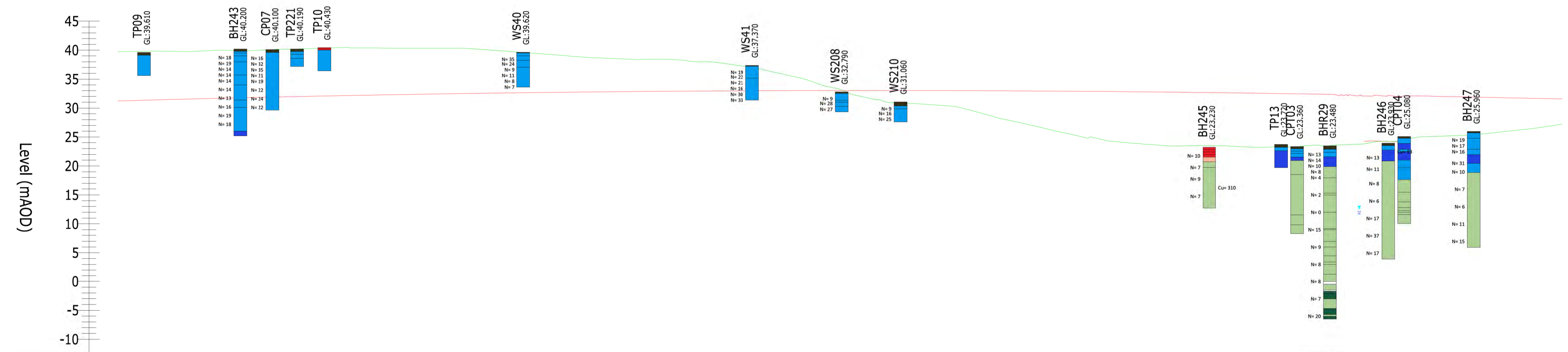
- EXPLORATORY HOLE LEGEND**
- Ground Level
 - Uncorrected SPT 'N' Value
 - Undrained Shear Strength Value (kPa)
 - Water Strike
 - Water level recorded following strike
 - Menard Limit Pressure (MPa)

- GROUND INVESTIGATION PHASES**
- 2022 ALIGNMENT REFINEMENT GROUND INVESTIGATION
 - 2021 SUPPLEMENTARY STAGE 1 GROUND INVESTIGATION
 - 2019/20 PRELIMINARY GROUND INVESTIGATION

- PLAN LEGEND**
- SITE EXTENTS BOUNDARY
 - CABLE PERCUSSION BOREHOLE
 - ROTARY OPEN HOLE BOREHOLE
 - CABLE PERCUSSION WITH ROTARY FOLLOW ON BOREHOLE
 - WINDOWLESS SAMPLE
 - DYNAMIC PROBE
 - TRIAL PIT/TRENCH
 - CPT LOCATION
 - DYNAMIC CONE PENETROMETER
 - PAVEMENT CORE

Mapping reproduced by permission of Ordnance Survey on behalf of HMSO.
 © Crown copyright and database rights 2020 Ordnance Survey 100019340.

NWL-MAINLINE NORTH-(SHEET 4)
 SCALE: H 1:1000,V 1:500. DATUM: -10.000



Chainage	Existing Levels	Proposed Levels	Level Difference
1+320	31.227	31.227	-8.513
330	31.982	31.982	-8.459
340	31.982	31.982	-8.298
1+350	31.617	31.617	-8.256
360	31.737	31.737	-8.202
370	31.851	31.851	-8.157
380	40.162	40.162	-8.202
390	40.323	40.323	-8.259
1+400	40.444	40.444	-8.278
410	40.373	40.373	-8.117
420	40.326	40.326	-7.982
430	40.329	40.329	-7.905
440	40.331	40.331	-7.803
450	40.307	40.307	-7.793
460	39.969	39.969	-6.972
470	39.614	39.614	-6.537
480	39.240	39.240	-6.078
490	38.952	38.952	-5.529
1+500	38.638	38.638	-5.530
510	38.426	38.426	-5.070
520	38.001	38.001	-4.732
530	37.910	37.910	-4.051
540	37.694	37.694	-2.876
1+550	37.037	37.037	-1.598
560	36.880	36.880	-0.213
570	33.240	33.240	1.321
580	31.899	31.899	2.143
590	30.885	30.885	2.388
1+600	30.633	30.633	2.722
610	30.296	30.296	4.035
620	28.956	28.956	5.250
630	27.717	27.717	6.355
640	26.594	26.594	7.457
1+650	25.448	25.448	8.228
660	24.638	24.638	8.840
670	23.981	23.981	9.173
680	23.598	23.598	9.242
690	23.476	23.476	9.141
1+700	23.516	23.516	9.292
710	23.299	23.299	9.221
720	23.300	23.300	9.019
730	23.425	23.425	8.838
740	23.678	23.678	8.477
1+750	23.763	23.763	7.941
760	24.243	24.243	7.121
770	24.986	24.986	6.809
780	25.176	25.176	6.483
790	25.399	25.399	5.843
1+800	25.937	25.937	5.194
810	26.482	26.482	4.355
1+820	31.573	31.573	

First Issue

P01	AR	AR	AR	02/02/23
-----	----	----	----	----------

Norfolk County Council
 Tom McCabe
 Executive Director of
 Community and Environmental Services
 Norfolk County Council
 County Hall, Martineau Lane
 Norwich NR1 2SG

Norwich Western Link
ferrovial construction
RAMBOLL

DRAWING TITLE
 NORWICH WESTERN LINK
 GEOLOGICAL LONG SECTION
 SHEET 4
 NORTHBOUND

DRAWING STATUS
 S5 SUITABLE FOR REVIEW AND ACCEPTANCE

DRAWN	CHECKED	APPROVED	AUTHORISED
AR	AR	AR	---
SCALE @ A1 SIZE 1:1000		DATE 02/02/23	REVISION P01

DRAWING NUMBER
 NCCT41793-RAM-HGT-MLE-DR-GI-2604